

The Columbaria



*The Columbaria at
Walker Chapel Historic Cemetery*

2025

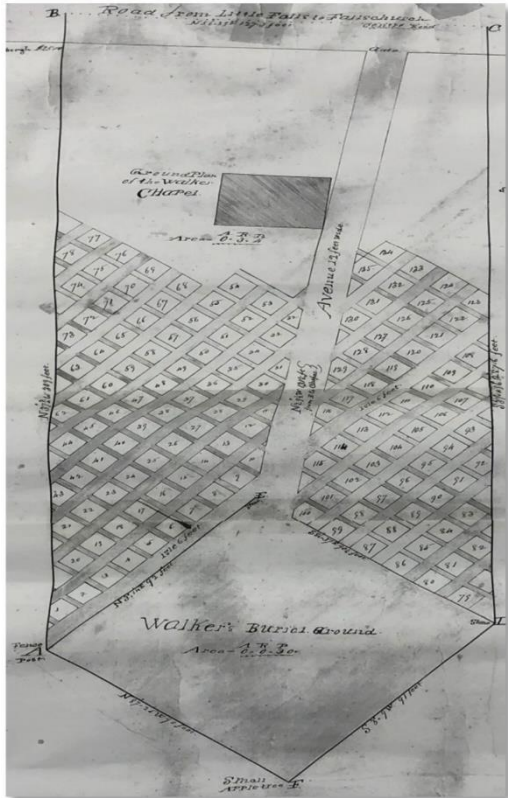
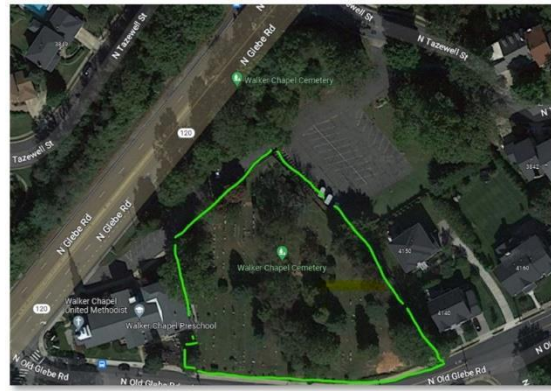


Walker Chapel UMC
4102 N. Glebe Road
Arlington, VA 22207
703-538-5200
www.walkerchapel.org
www.chapelcemetery.org

Welcome to

Walker Chapel Historic Cemetery

a sacred space nestled within the serene embrace of Arlington County. Steeped in history and tradition, our cemetery offers a tranquil final resting place for cherished memories to endure through generations.



As seen above, the Walker Chapel Historic Cemetery is in the green outline. The approximate location of the original Walker family Burial Ground is in the lower right corner of the Cemetery.

Established in the 1800s, Walker Chapel Historic Cemetery traces its roots back to the founding families of Walker Chapel. What began as humble gatherings in homes evolved into a steadfast beacon of faith and community. The entire grounds, spanning 92,400 square feet, have significance and are designated as an Arlington Historical District.

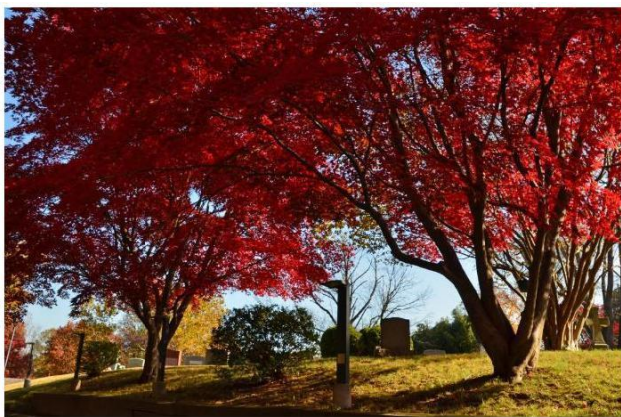
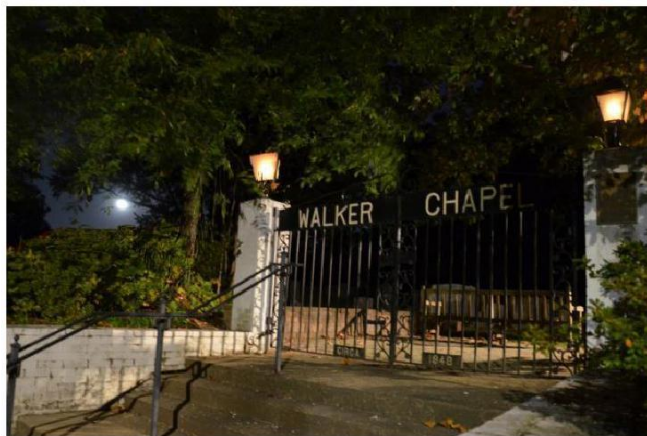
At Walker Chapel, we honor the legacy of those who came before us. The earliest recorded burial dates to 1848, marking the beginning of a sacred journey that continues to this day. As stewards of this sacred ground, the Walker Chapel Board of Trustees ensures that every aspect of our cemetery reflects the reverence and respect befitting of its heritage.

Rooted in the principles of the United Methodist Church, Walker Chapel Historic Cemetery operates with integrity and compassion. Our policies and procedures uphold the sanctity of burial grounds, providing solace and support to families during their time of need. We adhere to the Methodist *Book of Discipline* and embrace the community spirit, welcoming all who seek solace within our hallowed grounds.

At Walker Chapel Historic Cemetery, we offer a range of services tailored to meet the diverse needs of our community. This *Guide* explains in detail for the Columbaria those services and the policies, procedures, and guidelines that define us. For more information about our services and pricing or to schedule a visit, please visit our website at www.chapelcemetery.org. Our dedicated staff and volunteers are ready to assist you in person, over the phone, via email, or when you visit. At Walker Chapel Historic Cemetery, we are honored to be entrusted with your cherished memories and pledge to serve you with the utmost care and reverence.

Please visit the Walker Chapel Historic Cemetery, a tranquil sanctuary steeped in rich Christian heritage. Here, amidst the solemn beauty of our grounds, we honor the memory of those who have gone before us with utmost reverence and dignity.

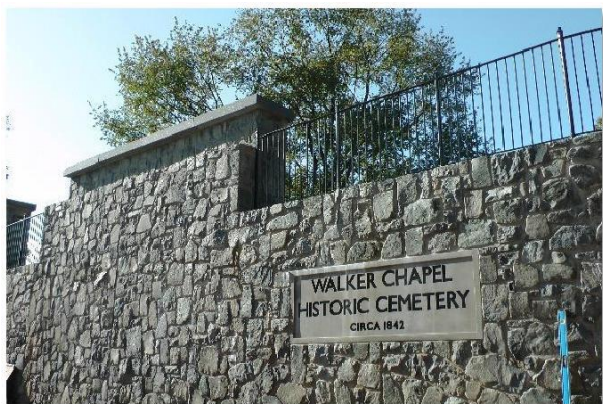
As stewards of this sacred space, we uphold a code of conduct that fosters reverence and respect. Visitors are kindly reminded to observe a solemn demeanor. Our serene grounds are dedicated to the peaceful rest of the departed, and we ask that all who enter do so with the utmost respect for their memory.



While our cemetery is a place of quiet contemplation, it also serves as a gathering space for expressions of faith and community. Families are welcome to participate in our annual Easter Egg hunt, celebrating the joy of the season amidst the tranquil beauty of nature.

We kindly request that all activities within the cemetery grounds align with our mission of reverence and respect. This includes adhering to interment practices, visiting hours, and vehicle access guidelines.

Our commitment to maintaining the sanctity of this hallowed ground is unwavering, ensuring that future generations may also find solace within its sacred confines.



At Walker Chapel Historic Cemetery, we honor the past while embracing the future, guided by the timeless principles of faith and respect. We invite you to join us in preserving the sanctity of this cherished space, as we continue to uphold the sacred legacy of those who rest here.

As you consider honoring your loved ones within our sacred grounds, allow us to outline the principles that shape our shared experience:

Ownership and Licensing: Each Columbaria gravesite is licensed through a Right of Inurnment License, symbolizing a commitment to honor and cherish the memory of those who rest here. While not conferring ownership, this license grants the right of use for burial or inurnment, ensuring a lasting legacy for you and your extended family.



Generational Tradition: We honor tradition by limiting each family generational unit to six companion niches or three family niches. This allows subsequent generations to embrace our heritage while preserving the availability of others.

Respect for Diversity: Regardless of race, gender orientation, or age, all are welcome within our historic Methodist Cemetery, united by the common thread of humanity under the care of Walker Chapel.

Guided by Pastoral Care: Our Pastor oversees all aspects of burial, funeral, or memorial services, ensuring each ceremony reflects the values of compassion and dignity.

Graveside Services: A graveside service is an expected part of our process. It provides a sacred space for families to gather, reflect, and bid farewell. The service may be as simple as a family gathering with chapel staff sharing memories or a faithful gathering of friends and family led by clergy.

Commitment to Excellence: From service arrangements to event coordination, our team stands ready to assist you at every step, ensuring a seamless experience during challenging times.

Financial Transparency: We uphold financial integrity by settling all fees before the commencement of graveside services, ensuring clarity and peace of mind for families.

Attention to Detail: Our commitment extends to the smallest details, including uniform engraving on cover stones and approved medallions, preserving the dignity of each memorial.

Preservation of Sacred Space: We maintain the sanctity of our grounds by prohibiting scattering of remains anywhere within the Chapel Historic District, thus safeguarding its tranquility.

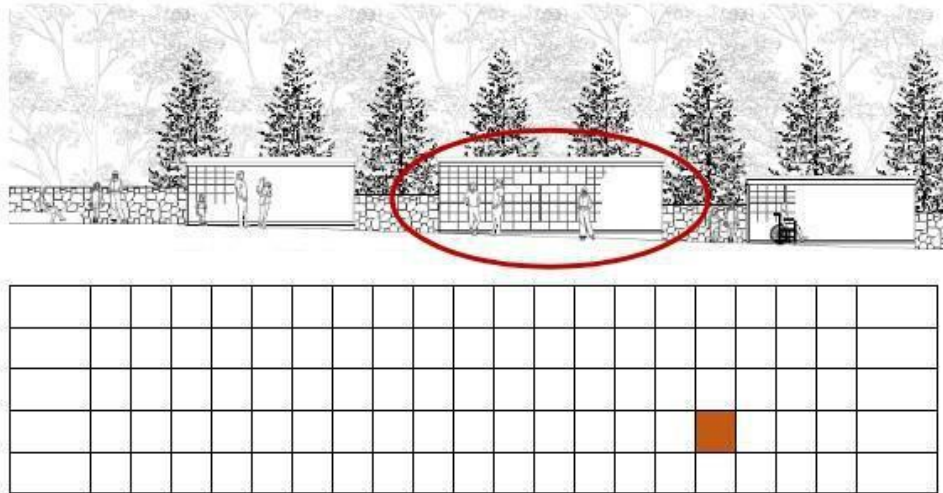


Providing Comfort: The cemetery or designated vendors provide canopies, seating, and other amenities, ensuring a comfortable and dignified environment for all attendees.

As you embark on this journey with us, know that Walker Chapel's Historic Cemetery is more than a final resting place, a sanctuary of remembrance, where every detail is crafted with care and reverence. Welcome to our community, where love and legacy endure.

*The Columbaria
at Walker Chapel Historic Cemetery*

The Columbaria are in a private, sacred location in the cemetery for privacy in grief and visitation. The first three columbaria units are spaced along the top of a stone wall and are encased in matching stone. Each has companion niches and family niches. Each has five rows of niches with the companion niches in the middle and the family niches on the ends.



Companion niches accommodate two urns, and the family niche accommodates four to six urns. The standard urns are 5.5" x 5.5" square and 7" tall.


Most families select their niche long before it is needed but may be selected whenever needed. Once a request has been received, the Cemetery staff will meet with the primary contact for the license to view the available niches and confirm the selection. An invoice for the ROI License is prepared by the Cemetery and upon payment, a niche ROI License is issued to the primary Licensee and optional secondary Licensee.

At the licensee's option, the granite facing may be partially engraved to later be completed upon interment, or the granite facing may be left blank since only full lines may be engraved. Engraving fees for the granite cover are based on a maximum of 23 characters per line and up to six lines. All niches have the same text layout and font. Text may be added anytime, but each engraving is a separate fee. The cemetery will coordinate all shipping, engraving, and installation of the finished granite facing. While removed for engraving, a temporary granite front will be inserted by the cemetery to be replaced with the engraved panel upon return from the stone carvers.

Upon request, the primary contact or their designated representative will contact the Chapel Office and arrange the date, time, and service plans for the inurnment. The niche size limits the size of the urn, and the ROI Licensee, or their designated representative, is responsible for selecting an urn that meets the niche's size requirements. Urns are available from the Cemetery to facilitate selection. Interment services may be simple family gatherings up to a full religious service, including military honors if applicable.

As you embark on this journey with us, know that Walker Chapel's Historic Cemetery is more than a final resting place, a sanctuary of remembrance, where every detail is crafted with care and reverence.

Fees for interment vary by the graveside service wishes. A Burial License is required, together with a copy of the Certificate of Cremation. Opening, preparing, and closing the niche and recording the interment is a single fee each time the niche is opened.

| Item | Description | Fee Range |
|---|---|------------------------|
| Companion Niche | Space for two 5.5" x 5.5" x 7" urns. | \$5,900.00 |
| Family Niche | Space for four to six 5.5" x 5.5" x 7" urns. | \$11,800.00 |
| Inurnment Service | The Service may range from simple family gatherings to larger groups with Pastoral service, chairs, canopy, ground cover, and tables. | \$500.00 to \$2,500.00 |
| Engraving Service | Fees are based on the number of lines of engraving. All lines must be complete and cannot later be changed or augmented. The format and font are fixed for Walker Chapel. The limit is six lines. | \$300.00 to \$600.00 |
| Inurnment License | A Cemetery Inurnment License documents the funeral home, service providers, and cemetery staff for one inurnment and is recorded together with a family provided Certificate of Cremation. | \$950.0 |
| Cemetery Fee | The administrative fee to the cemetery is for coordinating one inurnment, recording it in the records of Walker Chapel, and to fund the eternal care of the grounds. | \$1,350.00 |
|  | The Cemetery can provide a 5.5" x 5.5" x 7" brass urn designed to fit within the space allowed for either niche | \$150.00 |



Funding and Stewardship

The upkeep of our cemetery is made possible through the generous support of donors and the stewardship of our Trustees:

- † **Perpetual Care Fund:** Established from bequests and donations, the Chapel Trustees and Treasurer manage the fund to ensure ongoing maintenance and upkeep based on its return on investment.
- † **Donations and Gifts:** Whether designated or general, contributions to the cemetery play a vital role in preserving its sacred legacy. Gifts to the cemetery may be for general use or be designated for a specific application. The wishes of the donor will be followed in all cases.

The Leadership Board and the Chapel Trustees appoint the Cemetery manager to oversee the day-to-day operation of the Cemetery. The Cemetery manager and all cemetery staff are volunteers who do not receive compensation for their work.

Stay Connected

Communication is key to preserving the legacy of those laid to rest in our cemetery:

- † **Annual Contact:** Each January, the Cemetery Manager contacts license holders to validate contact information, ensuring ongoing connection and care.
- † **Reach Out:** For inquiries or assistance, contact us via email at cemetery@walkerchapel.org or by phone at 703-538-5200.

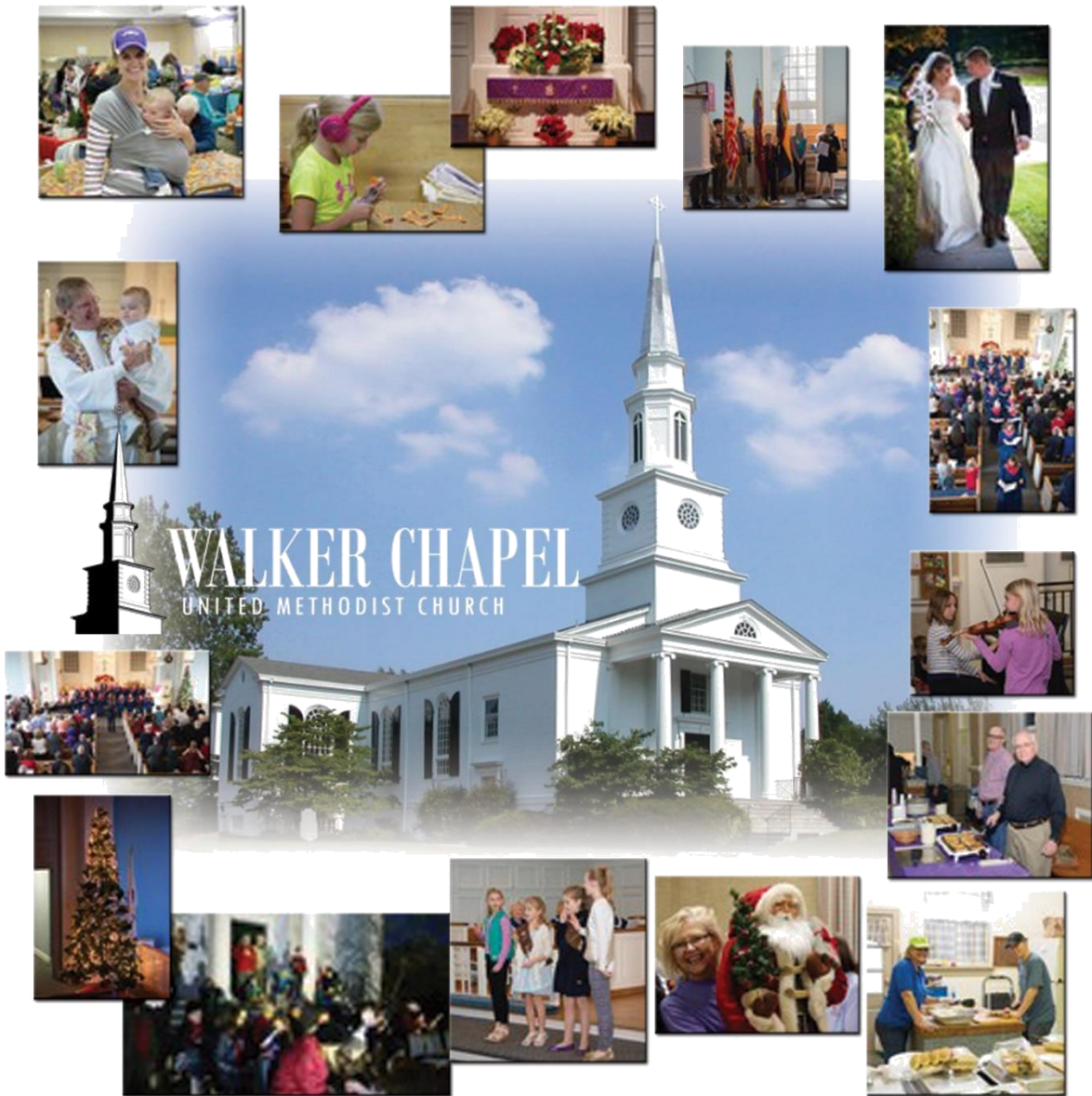
Contact us by email to cemetery@walkerchapel.org

Or phone the Chapel Office at 703-538-5200 x106

For more information, pictures, and details, you are invited to click the link below to visit the chapel cemetery website at:

www.chapelcemetery.org

Thank you for considering Walker Chapel Historic Cemetery as the final resting place for your loved ones. We understand the importance of this decision and vow to support you every step of the way. In the quiet embrace of our sacred grounds, may you find solace, peace, and the eternal presence of cherished memories.



*"Those who wait for the Lord shall renew their strength,
they shall mount up with wings like eagles,
they shall run and not be weary,
they shall walk and not faint."*

Isaiah 40:31