

The Memorial Garden



*The Memorial Garden at
Walker Chapel Historic Cemetery*

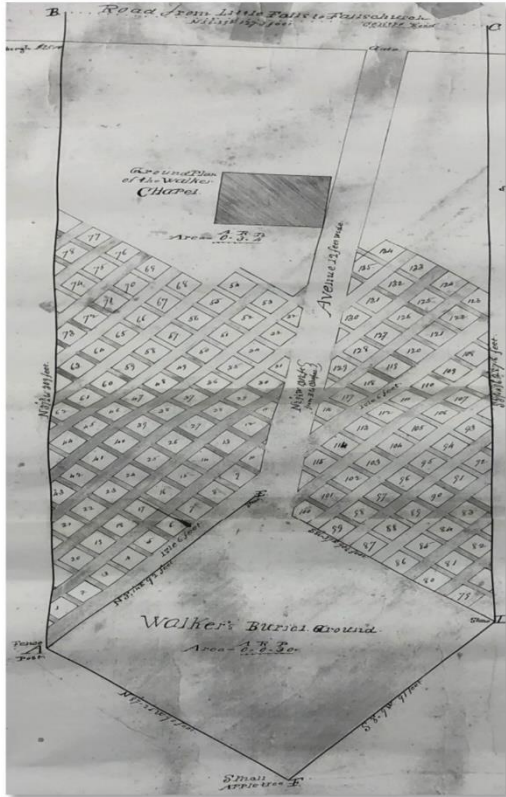
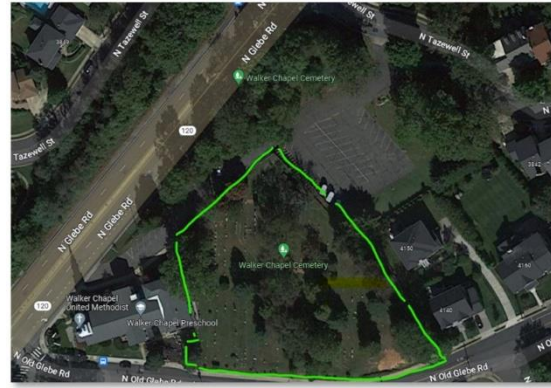
2024 ~ 2025

Walker Chapel UMC
4102 N. Glebe Road
Arlington, VA 22207
703-538-5200
www.walkerchapel.org
www.chapelcemetery.org

Welcome to

Walker Chapel Historic Cemetery

a sacred space nestled within the serene embrace of Arlington County. Steeped in history and tradition, our cemetery offers a tranquil final resting place for cherished memories to endure through generations.



Seen from above, the Walker Chapel Historic Cemetery is located within the green outline. The approximate location of the original Walker family Burial Ground is in the lower right corner of the Cemetery.

Established in the 1800s, Walker Chapel Historic Cemetery traces its roots back to the founding families of Walker Chapel. What began as humble gatherings in homes evolved into a steadfast beacon of faith and community. The entire grounds, spanning 92,400 square feet, hold significance and are designated as an Arlington Historical District.

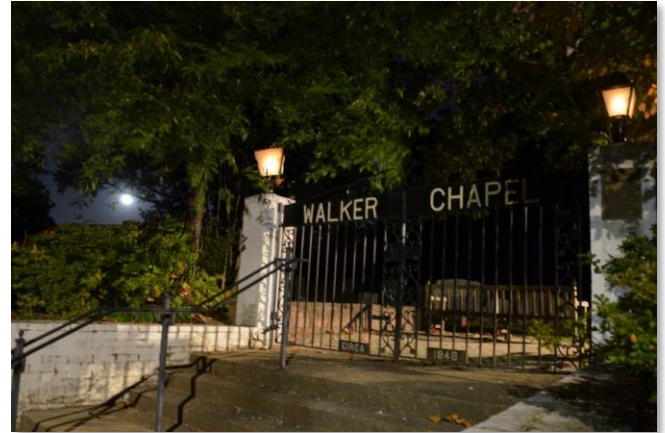
At Walker Chapel, we honor the legacy of those who came before us. The earliest recorded burial dates to 1848, marking the beginning of a sacred journey that continues to this day. As stewards of this sacred ground, the Walker Chapel Board of Trustees ensures that every aspect of our cemetery reflects the reverence and respect befitting of its heritage.

Rooted in the principles of the United Methodist Church, Walker Chapel Historic Cemetery operates with integrity and compassion. Our policies and procedures uphold the sanctity of burial grounds, providing solace and support to families during their time of need. We adhere to the *Methodist Book of Discipline*, and embrace the spirit of community, welcoming all who seek solace within our hallowed grounds.

At Walker Chapel Historic Cemetery, we offer a range of services tailored to meet the diverse needs of our community. This *Guide* explains in detail for the Columbaria those services and the policies, procedures, and guidelines that define us. For more information about our services, and pricing, or to schedule a visit, please visit our website at www.chapelcemetery.org. Our dedicated staff and volunteers are ready to assist you in person, over the phone, via email, or when you visit. At Walker Chapel Historic Cemetery, we are honored to be entrusted with your cherished memories, and we pledge to serve you with the utmost care and reverence.

Please visit the Walker Chapel Historic Cemetery, a tranquil sanctuary steeped in rich Christian heritage. Here, amidst the solemn beauty of our grounds, we honor the memory of those who have gone before us with utmost reverence and dignity.

As stewards of this sacred space, we uphold a code of conduct that fosters a sense of reverence and respect. Visitors are kindly reminded to observe a solemn demeanor. Our serene grounds are dedicated to the peaceful rest of the departed, and we ask that all who enter do so with the utmost respect for their memory.



While our cemetery is a place of quiet contemplation, it also serves as a gathering space for expressions of faith and community. Families are welcome to participate in our annual Easter Egg hunt, celebrating the joy of the season amidst the tranquil beauty of nature.

We kindly request that all activities within the cemetery grounds align with our mission of reverence and respect. This includes adhering to guidelines regarding interment practices, visiting hours, and vehicle access.

Our commitment to maintaining the sanctity of this hallowed ground is unwavering, ensuring that future generations may also find solace within its sacred confines.

At Walker Chapel Historic Cemetery, we honor the past while embracing the future, guided by the timeless principles of faith and respect. We invite you to join us in preserving the sanctity of this cherished space, as we continue to uphold the sacred legacy of those memorialized here.



Guidelines

As you consider honoring your loved ones within our sacred grounds, allow us to outline the principles that shape our shared experience:

Membership: The Memorial Garden is reserved for members of Walker Chapel.

Ownership and Licensing: Each Garden Memorial is licensed through a Memorial License, symbolizing a commitment to honor and cherish the memory of those who are memorialized here. While not conferring ownership, this license ensures a legacy for you and your extended family.



Guided by Pastoral Care: Our Pastor oversees all aspects of memorial services, ensuring each ceremony reflects the values of compassion and dignity.

Graveside Services: A graveside service is optional, a mandatory part of our process, providing a sacred space for families to gather, reflect, and bid farewell. The Service may be as simple as a gathering of family with Chapel staff sharing memories to a faithful gathering of friends and family lead by clergy.

Commitment to Excellence: From service arrangements to event coordination, our team stands ready to assist you every step of the way, ensuring a seamless experience during a challenging time.

Financial Transparency: We uphold financial integrity by settling all fees before the commencement of graveside services, ensuring clarity and peace of mind for families.

Decorations Considerations: While flowers and small objects are permitted near markers, it is essential to acknowledge the open nature of the garden, where items may be exposed to natural elements and wildlife.

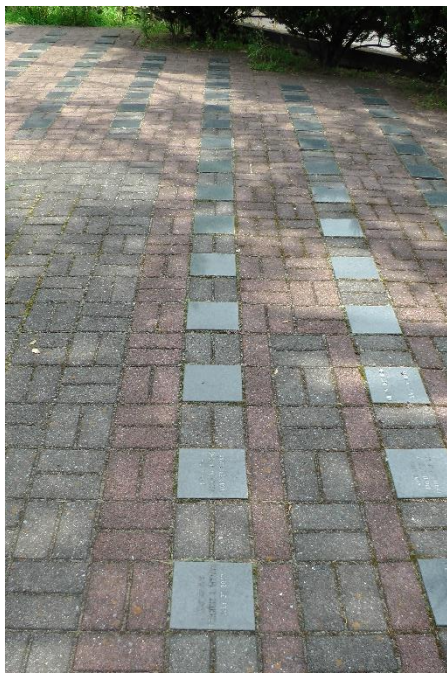


Preservation of Sacred Space: We maintain the sanctity of our grounds by prohibiting scattering of cremains in or around the Memorial Garden, thus safeguarding its tranquility.

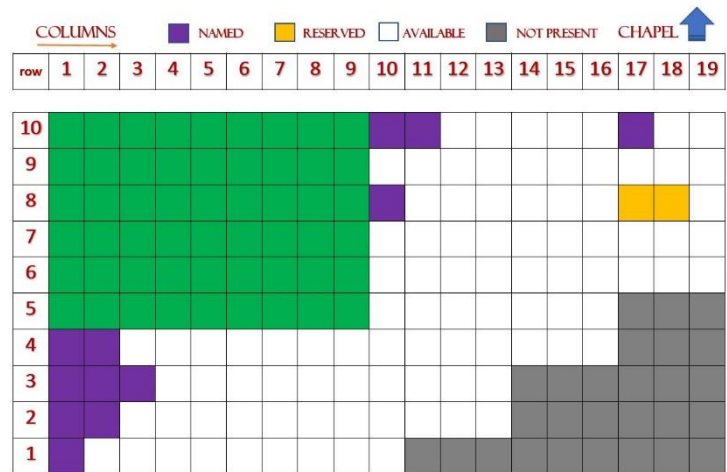
As you embark on this journey with us, know that Walker Chapel's Historic Cemetery is a sanctuary of remembrance, where every detail is crafted with care and reverence. Welcome to our community, where love and legacy endure.

The Memorial Garden at Walker Chapel Historic Cemetery

The Memorial Garden embraces simplicity and reverence, offering individual granite markers amidst pavers, with a central stone commemorating the legacy of the first Walker Chapel United Methodist Church. The Memorial Garden is licensed only to members of the Chapel. The Memorial Garden is located on the site of the original Walker Chapel and thus memorializes the founding of the Chapel while also memorializing those names engraved on the garden’s granite stones. It is a private, sacred location in the cemetery for memories and visitation. The memorial stones are spaced evenly across the surface of the garden and are engraved with the name and optionally, with dates.



WALKER CHAPEL MEMORIAL GARDEN LAYOUT



The chart above documents the placement of the memorial stones, which have been dedicated and which are available. The current chart is always available at <https://chapelcemetery.org/memorial-garden-2/>.

The family first meets with the cemetery staff to view the garden and select the location for their memorial. Once an application has been received, the Cemetery staff will meet with the primary contact for the license to confirm the selection and the engraving for the stone, typically limited to one name and an abbreviated date range. An invoice for the Memorial License is prepared by the Cemetery and upon payment, the Memorial License is issued granting the right to memorialize a loved one in this sacred space.

The cemetery will arrange for the stone to be inscribed as certified by the Licensee. Installation will occur either prior to or during **an optional** graveside service.

The Licensee or their designated representative will contact the Cemetery and arrange the date, time, and service plans for the Memorial Service.

As you embark on this journey with us, know that Walker Chapel's Historic Cemetery is more than a final resting place—it is a sanctuary of remembrance, where every detail is crafted with care and reverence.

Fees vary by the service wishes. **A Burial License is required together with a copy of the Death Certificate and optionally, the Certificate of Cremation.**

Item	Description	Fee Range
One Memorial	May be used for one or two related individuals. Walker Chapel members only.	\$1,500.00
Optional Memorial Service	The Service may range from simple family gatherings to larger groups with Pastoral service, chairs, canopy, ground cover, and tables.	\$500.00 to \$2,500.00
Engraving Service	Up to two names and two abbreviated dates depending on the length of the data and the available space.	\$500.00
Burial License	A Cemetery Burial License documents the funeral home, service providers, and cemetery staff for one memorial and is recorded together with a family provided Death Certificate and optionally with a Certificate of Cremation.	\$500.00 to \$600.00
Cemetery Fee	The administrative fee to the cemetery for coordinating the memorial and recording it in the records of Walker Chapel, and to fund the eternal care of the grounds.	\$1,000.00 \$500.00



Funding and Stewardship

The upkeep of our cemetery is made possible through the generous support of donors and the stewardship of our Trustees:

- † **Perpetual Care Fund:** Established from bequests and donations, the Chapel Trustees and Treasurer manage the fund to ensure ongoing maintenance and upkeep from the return on investment of the fund.
- † **Donations and Gifts:** Contributions to the cemetery, whether designated or general, play a vital role in preserving its sacred legacy. Gifts to the cemetery may be for general use or be designated for a specific application. The wishes of the donor will be followed in all cases.

The Leadership Board and the Trustees of the Chapel appoint the Cemetery manager to oversee the day-to-day operation of the Cemetery. The Cemetery manager and all cemetery staff are volunteers and do not receive any compensation for their work.

Stay Connected

Communication is key to preserving the legacy of those laid to rest in our cemetery:

- † **Annual Contact:** Each January, the Cemetery Manager reaches out to license holders to validate contact information, ensuring ongoing connection and care.
- † **Reach Out:** For inquiries or assistance, contact us via email at cemetery@walkerchapel.org or by phone at 703-538-5200.

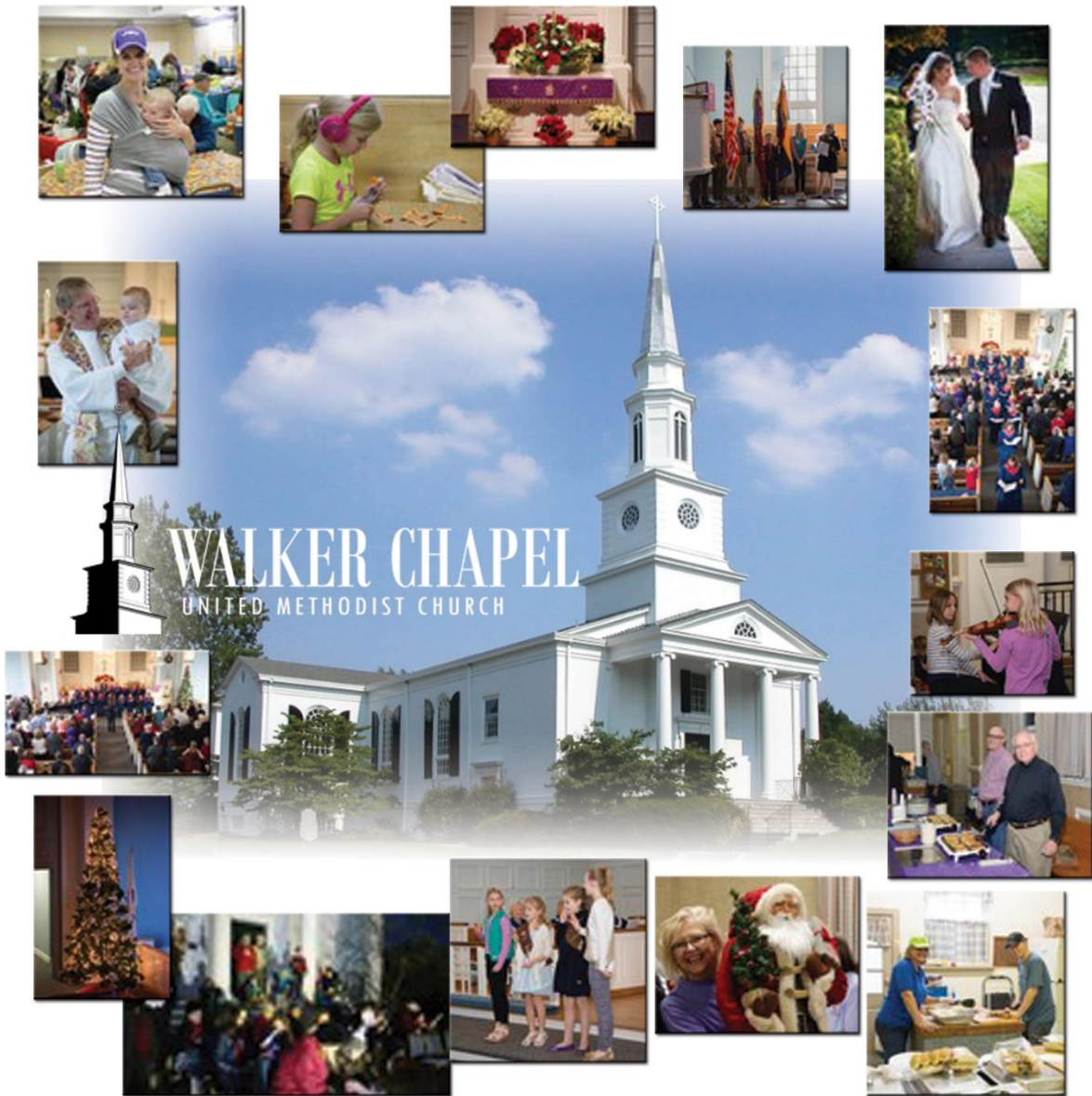
Contact us by email to cemetery@walkerchapel.org

Or phone the Chapel Office at 703-538-5200

For more information, pictures, and details, you are invited to click the link below to visit the chapel cemetery website at:

www.chapelcemetery.org

Thank you for considering Walker Chapel Historic Cemetery as the final resting place for your loved ones. We understand the importance of this decision and vow to support you every step of the way. In the quiet embrace of our sacred grounds, may you find solace, peace, and the eternal presence of cherished memories.



WALKER CHAPEL
UNITED METHODIST CHURCH

*“Those who wait for the Lord shall renew their strength,
they shall mount up with wings like eagles,
they shall run and not be weary,
they shall walk and not faint.”*

Isaiah 40:31